

Market : mai

INDUS : Industrial

## Company Snapshot: 6M/2021

Updated at August 2021

SANKO

บริษัท ชังโกะ ไดคาสติ้ง (ประเทศไทย) จำกัด (มหาชน)  
SANKO DIECASTING (THAILAND) PUBLIC COMPANY LIMITEDHead Office : Rojana Industrial Park 3/14 Moo 2, T. Nongbua, A. Bankhai Rayong  
21120Contact : 0-3301-0701-5,  
062-597-9780-2Website : [www.sankothai.net](http://www.sankothai.net)

## CEO/IRO

Mr. Rattawat Suksaichol  
Chief Executive OfficerTel : (033) 010701-05  
rattawat@sankothai.net

## CFO

Mr. Rattawat Suksaichol  
Act. Chief Financial OfficerTel : (033) 010701-05  
rattawat@sankothai.net

## Management

Ms. Prapaphan Chanapal  
Account and Finance  
Department ManagerTel : (033) 010701-05  
ac@sankothai.net

CG Report Score :



THSI List : -

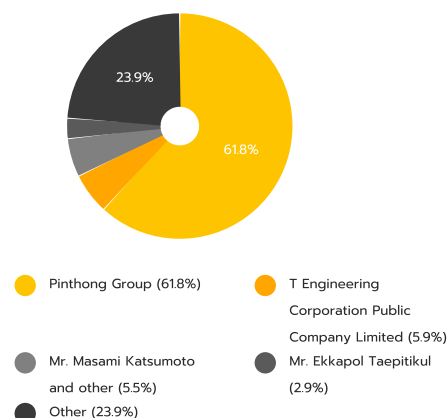
## Stock Data (23/08/2021)

	YTD	2020	2019
Paid-up (MB.)	154.27	154.27	152.69
Listed share (M.)	308.54	308.54	305.39
Par (B.)	0.50	0.50	0.50
Market Cap (MB.)	468.99	286.95	253.47
Price (B./share)	152	0.93	83.00
EPS (B.)	0.02	-0.12	0.13

## Statistics (23/08/2021)

	P/E	P/BV	Div.Yield
SANKO (x)	-	2.61	-
INDUS - mai (x)	30.58	2.21	2.00
INDUS - SET (x)	12.04	1.42	1.74
mai (x)	53.71	2.59	1.60
SET (x)	20.58	1.70	2.28

## Shareholder Structure (30/07/2021)



## Financial Ratios

	6M/2021	6M/2020	2020	2019
ROE (%)	-7.33	4.00	-18.40	19.71
ROA (%)	-1.27	2.13	-6.39	9.42
D/E (x)	1.67	1.15	1.51	1.07
GP Margin (%)	14.58	12.21	8.96	19.51
EBIT Margin (%)	3.20	-5.63	-6.18	6.38
NP Margin (%)	2.05	-7.28	-7.86	6.31

## Company Background

The Company manufactures aluminum parts and zinc parts by using extrusion technique, according to the customer's order. The main customers are automotive parts manufacturers which distribute to the automotive industry. Moreover, the company has been manufacturing CCTV components, Camera components and Intercom System components and has produced lawn mower parts and tractor parts. However, in the manufacturing of parts, the company has design and supply molds to perfectly meet customers' needs.

## Key Development of Company

2013	The Company trades its stocks for the first day in mai.
2015	As of July The Extraordinary General Shareholder's Meeting (1st/2015) came to the resolution for allowing the increase in registered capital of 37.34 MB or 74,681,625 share, increasing the registered capital from 113 MB. to 150.34 MB. or the total 300,681,625 shares, at 0.50 Baht per share.
2018	As of October the Company had changed the registered the capital since there had been an increase in investment. To the new amount of 199.39 MB. at 0.50 Baht per share.
2019	The Company's registered capital is 199.39 MB. The paid-in Capital of 152.69 MB. with the total of 305,387,696 shares

## Revenue Structure

Period : 30 Jun

(Unit : MB)

	6M/2021	%	6M/2020	%	2020	%	2019	%
Sales	314.86	47.17	213.94	-23.87	443.53	-25.75	597.34	9.71
Other Income	2.74	137.64	1.15	-54.89	7.29	54.58	4.72	216.50
Total Revenues	319.31	48.42	215.13	-24.15	450.82	-25.13	602.14	10.29
COGs	268.96	43.20	187.81	-17.17	403.79	-16.02	480.79	7.57
SG&A	39.20	-2.04	40.01	0.53	74.86	-12.94	85.99	15.29
Total Expenses	309.08	35.67	227.83	-14.19	478.68	-15.07	563.63	17.01
EBIT	10.23	-	-12.12	-	-27.85	-	38.66	68.84
Net Profit	6.55	-	-15.65	-	-35.42	-	38.19	223.06

# Business Plan

2021	Invested in installing 2 sets of CNC Drill & Tapping Center machines and 1 set of CNC Lathe machines to support more orders.
------	--

## Investment Highlight

2018	The Company installed new machinery which will use for manufacturing coverage order of customer continuously 25 MB
2019	1) Install machinery and equipment total value of 27 MB 2) Constructing a new factory building worth a total of 18 MB. The total amount of the year 2019 is 45 MB.
2020	The company has invested in installing 2 sets of CNC machines and 1 set of X-ray machines to support more orders.

## Risk Factor

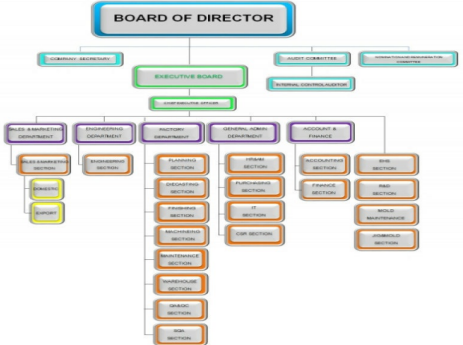
1. Risks from relying on major customers	The Company's core business is manufacturing products according to the customers' orders. In the year 2018, there were 3 major customers with the orders value of more than 10% of the total amount. The Company had corresponded with the customers and closely monitored the estimated trends and the possible changes of the production constantly, therefore the Company can predict the orders of each Company to a certain degree. Moreover, the Company implements the policy of limiting the order ratio of each customers to no larger than 30% of the total sales in order to protect the sales revenue in the case there are any sudden changes to the production of the main customers.
2. Risks from the fluctuations of raw materials prices	The Company produces parts that requires Aluminum bar as the main ingredient, where the price of Aluminum can be unstable according to the World's economic situation and the over supply in the market. However, the Company had followed the price of Aluminum in the market closely in order to prevent the said crisis and had ordered the materials in advance, including selecting 13 aluminum vendors to distribute the orders and reduce the risks of materials scarcity.
3. Risks from the Free Trade Agreement and the change in the Government's policy	The Company may be affected from the change in tariffs and the trading barriers. However, the Company strives to improve the product designs and the skills of the employees including establishing the knowledge center within the Company in order to provide technological knowledge in the fields of production and industry and promoting the development of human resource continuously in preparation for the increase competition in various industries.
4. Risks from shortage of labour	Currently, various companies had been competing in acquiring more high-skilled workers which resulted in the risks for the Company to have shortage of labour, increase in the wages of employers or risk losing skilled workers. However, the Company had taken into account the various benefits of the employees to prevent the change in jobs and had hired outsourcing companies to distribute certain amount of workers in order to increase production flexibility and reducing the effects from labour competition.

## Capital Structure

(Unit : MB)

	6M/2021	6M/2020	2020	2019
Current Liabilities	261.20	142.01	208.04	160.78
Non-Current Liabilities	39.47	66.53	53.44	64.59
Shareholders' Equity	179.89	180.60	173.33	211.52

## Company Structure



### Company Image



**Disclaimer:** This document is prepared by the listed company and aimed to disseminate company's information to investors for only investment decision support which do not aim to persuade company's securities trading. Investors should consider the above-presented information carefully for investment purpose. The Company shall not be responsible for any disadvantages may cause from using this information as investment decision. If investors require additional information, please find from disclosure information thru Form 56-1, Annual Report or information that disclosed via the Office of the Securities and Exchange Commission (SEC) and/or the Stock Exchange of Thailand (SET). The Company reserves the right to adjust this information without prior notice as well as the Company restricts any other to redo or copy or disseminate partial /all information to public without authorization